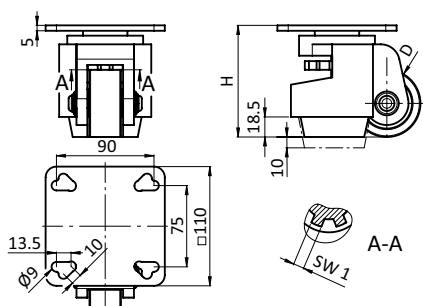


**LEVELING CASTOR WITH MOUNTING PLATE 40 / 45**

<b>MODEL</b>	with mounting plate
<b>DESCRIPTION</b>	Reliable leveling castor with integrated mounting plate For fixation to aluminum profiles with modular dimension 40 and 45 mm without overhang No additional transport and base plate needed; Roller movement locking by temporary positioning on stamp, actuation of the height adjustment of the stamp via adjustment wheel in the castor housing with wrench
<b>MATERIAL</b>	Mounting plate: Steel Housing: Aluminum die-cast Adjustment wheel: Plastic PA Stamp: Rubber NBR Roller: Plastic PA
<b>SURFACE</b>	Mounting plate: Zinc plated Housing: Powder coated
<b>COLOR</b>	Housing: White aluminum ≈ RAL 9006 Adjustment wheel: Orange ≈ RAL 2004 Stamp: Black Roller: Black
<b>PACK QUANTITY</b>	4 pieces



LEVELING CASTOR WITH MOUNTING PLATE 40 / 45	H	D	Max. Load [kg]	SW 1	Weight [g]	Part #
	103	62	500	12	1345.0	<b>098LF062AF110110</b>

