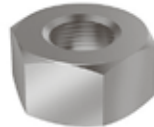
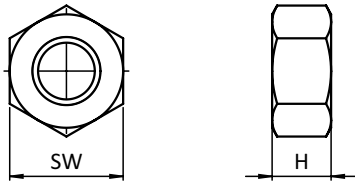


**MUTTER DIN 934 FÜR GEWINDESTANGE**

**NUT DIN 934 FOR THREADED ROD**

<b>Ausführung</b>	Stahl / Edelstahl	<b>Model</b>	Steel / stainless steel
<b>Beschreibung</b>	Kontermutter DIN 934 (ISO 4032) für Gewindestangen	<b>Description</b>	Jam nuts DIN 934 (ISO 4032) for threaded rods
<b>Material</b>	Stahl, verzinkt / Edelstahl A2, blank	<b>Material</b>	Steel, zinc plated / stainless steel A2, plain
<b>Liefereinheit</b>	10 Stück	<b>Pack Quantity</b>	10 pieces



Mutter DIN 934 für Gewindestange <i>Nut DIN 934 for Threaded Rod</i>	H [mm]	SW [mm]	Gewinde <i>Thread</i>	Gewicht [g] <i>Weight [g]</i>	Teil-Nr. <i>Part #</i>
Stahl, verzinkt <i>Steel, zinc plated</i>	4.7	8	M5	1.2	<a href="#">4DIN934M5M</a>
	5.2	10	M6	1.8	<a href="#">4DIN934M6M</a>
	6.8	13	M8	5.0	<a href="#">4DIN934M8M</a>
	8.4	16	M10	10.0	<a href="#">4DIN934M10M</a>
	10.8	18	M12	15.0	<a href="#">4DIN934M12M</a>
	11.0	22	M14	22.8	<a href="#">4DIN934M14M</a>
	14.8	24	M16	29.2	<a href="#">4DIN934M16M</a>
	18.0	30	M20	53.8	<a href="#">4DIN934M20M</a>
	21.5	36	M24	93.0	<a href="#">4DIN934M24M</a>
	25.6	46	M30	202.0	<a href="#">4DIN934M30M</a>
Edelstahl <i>Stainless Steel</i>	4.7	8	M5	1.2	<a href="#">4DIN934M5E</a>
	6.8	13	M8	5.0	<a href="#">4DIN934M8E</a>
	5.2	10	M6	1.8	<a href="#">4DIN934M6E</a>
	8.4	16	M10	10.0	<a href="#">4DIN934M10E</a>
	10.8	18	M12	15.0	<a href="#">4DIN934M12E</a>
	11.0	22	M14	22.8	<a href="#">4DIN934M14E</a>
	14.8	24	M16	29.2	<a href="#">4DIN934M16E</a>
	18.0	30	M20	53.8	<a href="#">4DIN934M20E</a>
	21.5	36	M24	93.0	<a href="#">4DIN934M24E</a>
	25.6	46	M30	202.0	<a href="#">4DIN934M30E</a>