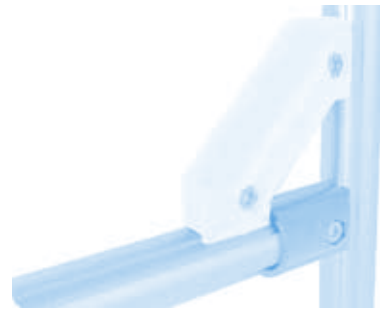
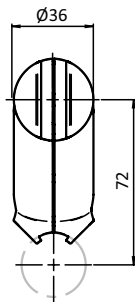
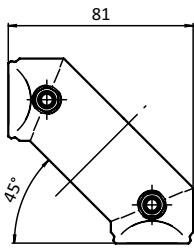




SET WINKELVERBINDER 2D28

SET ANGLE CONNECTOR 2D28

<p>Ausführung für Rundrohrprofile</p> <p>Beschreibung zur rechtwinkligen Verbindung von zwei Rundrohrprofilen mit Außendurchmesser \varnothing 28 mm, mit Verdrehsicherung; komplett vormontiertes Set</p> <p>Material Verbinder: Aluminiumdruckguss Montageset: Stahl</p> <p>Set 2 Elemente für Winkelverbinder 2D28, 2 Schrauben DIN 912 - M6 \times 25, 2 selbstsichernde Muttern ISO 10511 - M6</p> <p>Liefereinheit 10 Stück</p>	<p>Model For tubular frame profiles</p> <p>Description To connect two tubular frame profiles with \varnothing 28 mm outer diameter at right angles; with pre-centering; completely pre-assembled set</p> <p>Material Connector: Aluminum die-cast Assembly set: Steel</p> <p>Set 2 components for angle connector 2D28, 2 screws DIN 912 - M6 \times 25, 2 self-locking nuts ISO 10511 - M6</p> <p>Pack Quantity 10 pieces</p>
--	---



Set Winkelverbinder 2D28
Set Angle Connector 2D28

Gewicht [g]
Weight [g]

Teil-Nr.
Part #

elektrostatisch entladend electrostatically discharging

134.0

099RV2890QS01