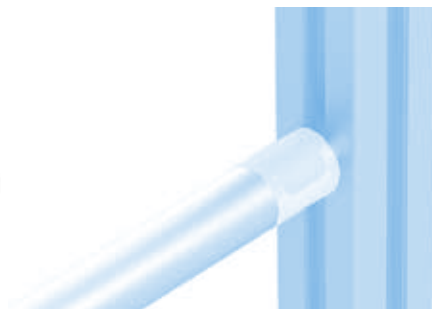
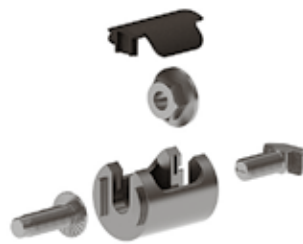
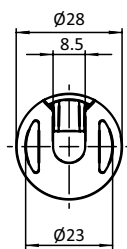
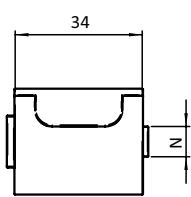




**SET T-VERBINDER D28, NUT 10**

**SET T-CONNECTOR D28, SLOT 10**

|   |   |
|---|---|
| <p><b>Ausführung</b> für Rundrohrprofile</p> <p><b>Beschreibung</b> zur rechtwinkligen Verbindung von einem Rundrohrprofil mit Außendurchmesser <math>\varnothing</math> 28 mm mit einem Aluminiumprofil Nut 10</p> <p><b>Material</b> Verbinder: Aluminiumdruckguss<br/>Abdeckkappe: Kunststoff PA, glasfaserverstärkt<br/>Montageset: Stahl</p> <p><b>Set</b> 1 T-Verbinder D28, Nut 10,<br/>1 Abdeckkappe,<br/>1 selbstformende Schraube S8 x 25, Torx T40,<br/>1 Flanschmutter M8,<br/>1 Hammerschraube - Nut 10 - M8 x 20</p> <p><b>Liefereinheit</b> 10 Stück</p> | <p><b>Model</b> For tubular frame profiles</p> <p><b>Description</b> To connect a tubular frame profile with <math>\varnothing</math> 28 mm outer diameter with a slot 10 aluminum profile</p> <p><b>Material</b> Connector: Aluminum die-cast<br/>Cover cap: Plastic PA<br/>Assembly set: Steel</p> <p><b>Set</b> 1 T-connector D28, slot 10,<br/>1 cover cap,<br/>1 self-tapping screw S8 x 25, Torx T40,<br/>1 flange nut M8,<br/>1 hammer head screw - Nut 10 - M8 x 20</p> <p><b>Pack Quantity</b> 10 pieces</p> |
|---|---|



Set T-Verbinder D28, Nut 10  
Set T-Connector D28, Slot 10

N

Gewicht [g]  
Weight [g]

Teil-Nr.  
Part #

10

62.0

099RV28TS01