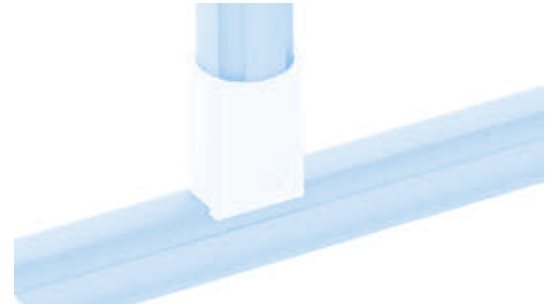
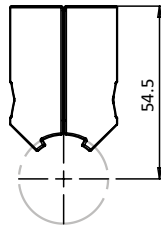
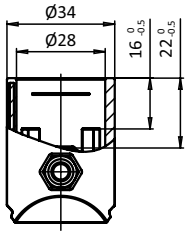




SET T-VERBINDER D28

SET T-CONNECTOR D28

<p>Ausführung für Rundrohrprofile</p> <p>Beschreibung zur rechtwinkligen Verbindung von zwei Rundrohrprofilen mit Außendurchmesser \varnothing 28 mm</p> <p>Material Verbinder: Aluminiumdruckguss Montageset: Stahl</p> <p>Set 2 Elemente für T-Verbinder D28, 1 Schraube DIN 912 - M6 \times 25, 1 selbstsichernde Mutter ISO 10511 - M6</p> <p>Liefereinheit 10 Stück</p>	<p>Model For tubular frame profiles</p> <p>Description To connect two tubular frame profiles with \varnothing 28 mm outer diameter at right angles</p> <p>Material Connector: Aluminum die-cast Assembly set: Steel</p> <p>Set 2 components for T-connector D28, 1 screw DIN 912 - M6 \times 25, 1 self-locking nut ISO 10511 - M6</p> <p>Pack Quantity 10 pieces</p>
---	--



Set T-Verbinder D28

Gewicht [g]
Weight [g]

Teil-Nr.
Part #

elektrostatisch entladend electrostatically discharging

56.0

099RV2890LS01