



**UNIBLOCK ZN 40**

**UNIBLOCK ZN 40**

**Ausführung** Zinkdruckguss, Nut 8, 10

**Model** Zinc die-cast, slot 8, 10

**Beschreibung** Befestigung von Flächenelementen an Aluminiumprofilen, besonders für hohe Belastungen von bis zu 2.000 N auf der Fläche

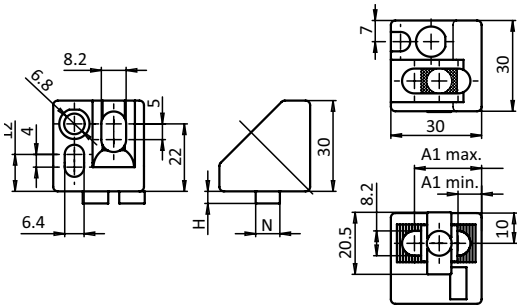
**Description** To attach panels to aluminum profiles; especially for high load bearing (up to 2000 N) on the panels

**Material** Zinkdruckguss

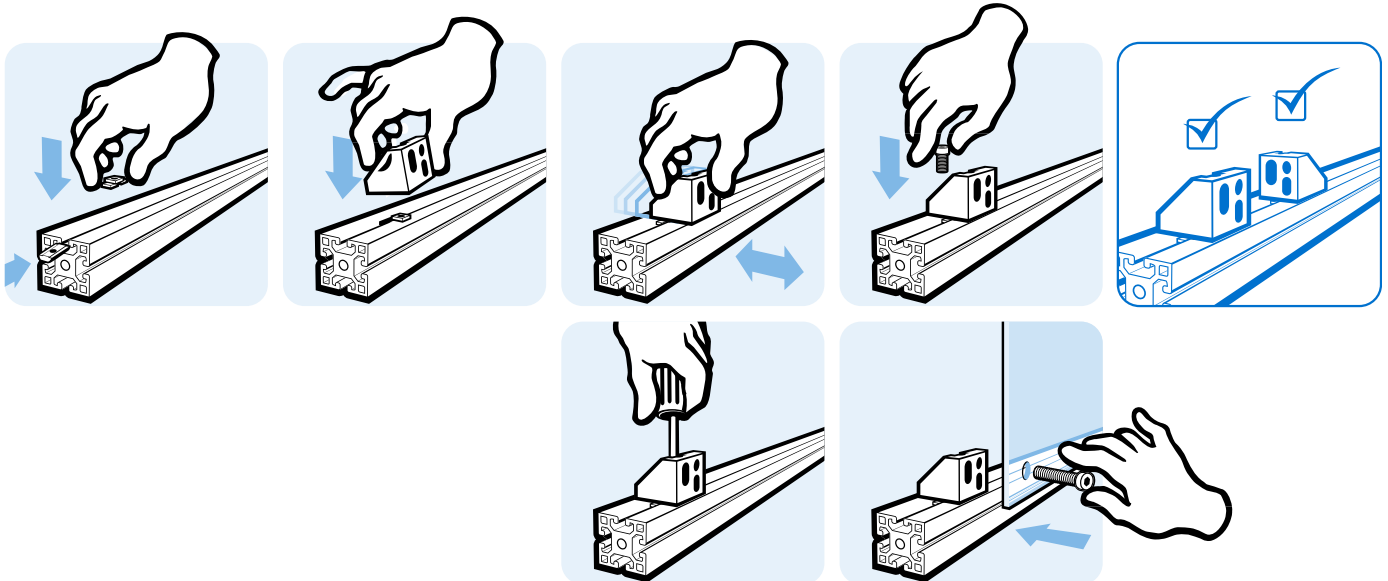
**Material** Zinc die-cast

**Liefereinheit** 10 Stück

**Pack Quantity** 10 pieces



Uniblock ZN 40	A1 max. [mm]	A1 min. [mm]	H [mm]	N	Gewinde Thread	Gewicht [g] Weight [g]	Profil Profile	Teil-Nr. Part #
	22.0	8.0			M6	61.4		<b>094Z40S</b>
	22.0	8.0	1.7	8	M6	69.8	B	<b>094Z40S0817</b>
	22.0	8.0	4.0	8	M6	67.0	I	<b>094Z40S0840</b>
	22.0	8.0	4.0	10	M6	72.0	B	<b>094Z40S1040</b>



10