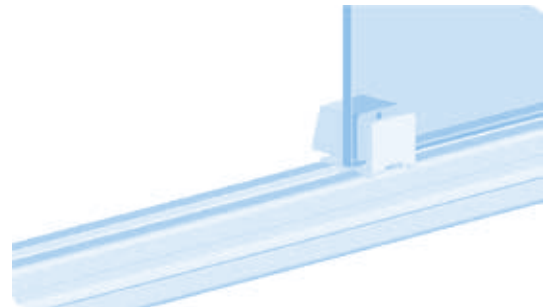
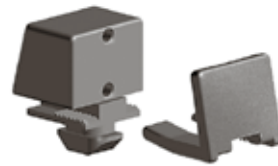
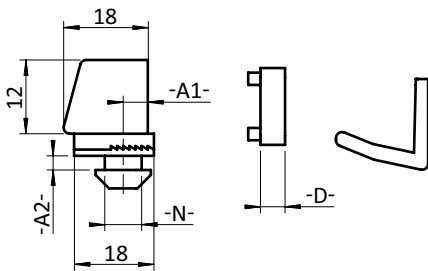




KLEMMBLOCK 14

CLIP BLOCK 14

| | | | |
|----------------------|---|----------------------|---|
| Ausführung | Kunststoff PA, Nut 8, 10, 12 | Model | Plastic PA, slot 8, 10, 12 |
| Beschreibung | zur werkzeuglosen Befestigung von Flächenelementen an Aluminiumprofilen | Description | To attach panels to aluminum profiles without screws or tools |
| Material | Kunststoff PA, glasfaserverstärkt | Material | Plastic PA, glass fiber reinforced |
| Farbe | schwarz | Color | Black |
| Spannbreite | Flächenelemente von 1 - 9 mm | Fixation Span | Panel units with a thickness of 1 - 9 mm |
| Liefereinheit | 100 Stück | Pack Quantity | 100 pieces |
| Extras | individueller Hammer, weitere Farben auf Anfrage | Specials | Customized hammer, other colors on request |
| Hinweis | * keine weiteren Distanzstücke aufsteckbar! | Tip | * no further spacers can be added! |



| Klemmblock Clip Block | A1 [mm] | A2 (Profil) [mm] A2 (Profile) [mm] | D [mm] | N | Gewicht [g] Weight [g] | Profil Profile | Teil-Nr. Part # |
|--------------------------|------------|---------------------------------------|-----------|----|---------------------------|-------------------|--------------------|
| | 5.0 | 4.5 (4.5) | | 8 | 7.8 | I | 094204 |
| | 11.5 | 4.5 (4.5) | | 8 | 8.3 | I | 094203 |
| | 7.0 | 2.2 (2.2) | | 8 | 7.4 | B | 094202 |
| | 14.0 | 5.8 (6.0) | | 10 | 8.0 | B | 094205 |
| Distanzstück Spacer | | | *2.0 | | 1.0 | | 094102K |
| | | | 3.0 | | 1.5 | | 094103K |
| | | | 5.0 | | 2.0 | | 094105K |

