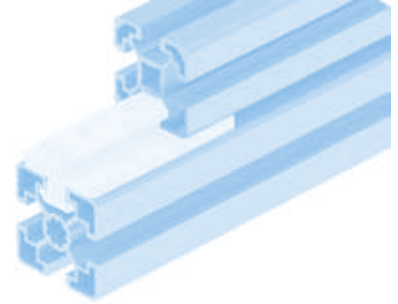
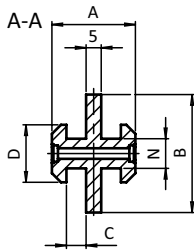
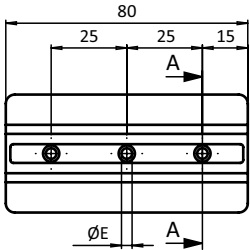




PROFILGLEITER NUT MITTIG

PROFILE SLIDER CENTER SLOT

| | | | |
|----------------------|--|----------------------|---|
| Ausführung | Nut 8, 10 | Model | Slot 8, 10 |
| Beschreibung | zur gleitenden Führung von Profilen mit Nut 8 oder Nut 10; ökonomische und verschleißarme Lösung, z. B. für Schiebetüren | Description | To guide slidingly profiles with slot; economic and wear-resistant solution, e.g. for sliding doors |
| Material | Kunststoff POM | Material | Plastic POM |
| Befestigung | mit Blechschrauben | Fastening | With sheet-metal screws |
| Liefereinheit | 10 Stück | Pack Quantity | 10 pieces |



| Profilgleiter Nut mittig Profile Slider Center Slot | A [mm] | B [mm] | C [mm] | D [mm] | E [mm] | N | Gewicht [g] Weight [g] | Profil Profile | Teil-Nr. Part # |
|--|-----------|-----------|-----------|-----------|-----------|----|---------------------------|-------------------|--------------------|
| | 18.0 | 26.0 | 3.0 | 15.0 | 2.8 | 8 | 29.0 | B | 093SM08 |
| | 27.6 | 39.0 | 6.5 | 19.0 | 3.5 | 10 | 53.0 | B | 093SM10 |