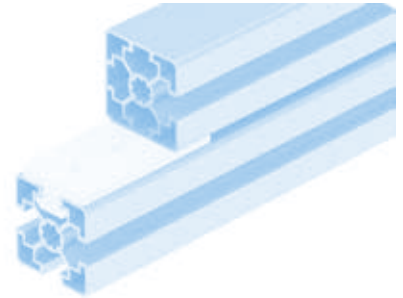
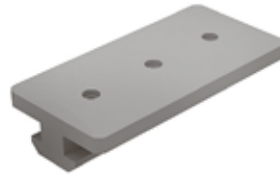
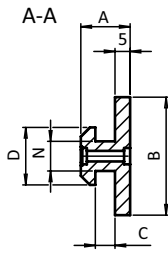
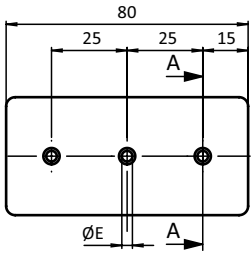




**PROFILGLEITER FLACH**

**PROFILE SLIDER FLATS**

<b>Ausführung</b>	Nut 6, 8, 10	<b>Model</b>	Slot 6, 8, 10
<b>Beschreibung</b>	zur gleitenden Führung von Profilen mit Nuten; ökonomische und verschleißarme Lösung, z. B. für Flächenelemente	<b>Description</b>	To guide slidingly profiles with slot; economic and wear-resistant solution, e.g. for panels
<b>Material</b>	Kunststoff POM	<b>Material</b>	Plastic POM
<b>Befestigung</b>	mit Blechschrauben	<b>Fastening</b>	With sheet-metal screws
<b>Liefereinheit</b>	10 Stück	<b>Pack Quantity</b>	10 pieces



Profilgleiter flach Profile Slider Flat	A [mm]	B [mm]	C [mm]	D [mm]	E [mm]	N	Gewicht [g] Weight [g]	Profil Profile	Teil-Nr. Part #
	9.8	17.0	2.3	11.5	2.8	6	13.0	B	093SM06S02
	11.5	26.0	3.0	15.0	2.8	8	22.0	B	093SM08S02
	16.3	39.0	6.5	19.0	3.5	10	37.0	B	093SM10S02