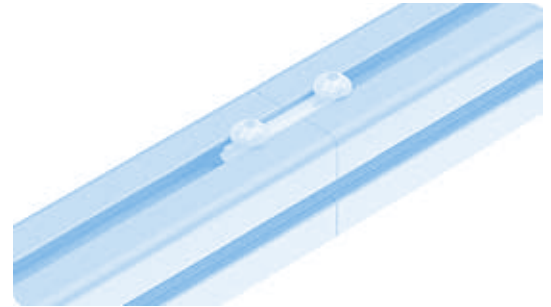
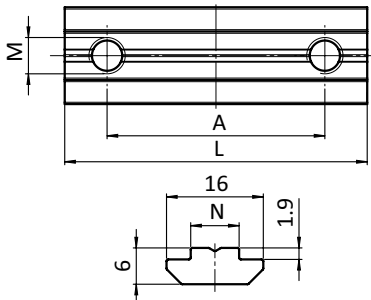




**STRECKENVERBINDER 50, NUT 8**

**CONNECTING STRIP 50, SLOT 8**

|                      |   |                      |   |
|----------------------|---|----------------------|---|
| <b>Ausführung</b>    | Stahl   | <b>Model</b>         | Steel   |
| <b>Beschreibung</b>  | zur stirnseitigen Verbindung von zwei Aluminiumprofilen ohne Profilbearbeitung                | <b>Description</b>   | End-to-end connection of two aluminum profiles without machining                          |
| <b>Material</b>      | Stahl, verzinkt   | <b>Material</b>      | Zinc plated steel   |
| <b>Set 1</b>         | 1 Streckenverbinder 50, Nut 8,<br>2 Schrauben ISO 7380 Form B - M6 x 8,<br>2 Scheiben DIN 125 | <b>Set 1</b>         | 1 connecting strip 50, slot 8,<br>2 screws ISO 7380 Form B - M6 x 8,<br>2 washers DIN 125 |
| <b>Set 2</b>         | 2 Streckenverbinder 50, Nut 8,<br>2 Schrauben DIN 913 - M6 x 10                               | <b>Set 2</b>         | 2 connecting strip 50, slot 8,<br>2 screws DIN 913 - M6 x 10                              |
| <b>Liefereinheit</b> | 10 Stück  | <b>Pack Quantity</b> | 10 pieces   |



| Streckenverbinder 50, Nut 8<br>Connecting Strip 50, slot 8 | A<br>[mm] | L<br>[mm] | N | Größe<br>Size | Gewicht [g]<br>Weight [g] | Profil<br>Profile | Teil-Nr.<br>Part # |
|--|-----------|-----------|---|---------------|---------------------------|-------------------|--------------------|
| Set 1  | 36.0      | 50.0      | 8 | M6            | 35.0                      | B                 | <b>096010S46</b>   |
| Set 2  | 36.0      | 50.0      | 8 | M6            | 29.0                      | B                 | <b>096010S05</b>   |