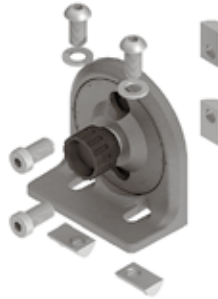
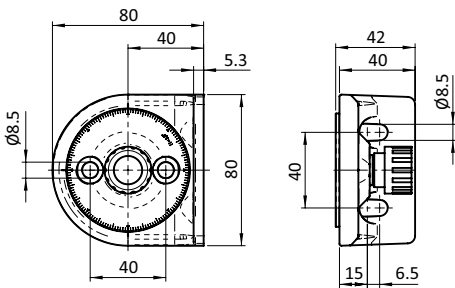




WINKELFESTSTELLUNG 40/80 (SET)

ANGLE LOCKING BRACKET 40/80 (SET)

<p>Ausführung Aluminiumdruckguss</p> <p>Beschreibung zur winkelverstellbaren Verbindung von zwei Alumium-Profilen, mittels Rändelschraube in 2,5° Schritten fixierbar</p> <p>Material Winkelgehäuse: Aluminiumdruckguss Rändelschraube: Kunststoff PA, glasfaserverstärkt Befestigungsmaterial: Stahl</p> <p>Farbe Rändelschraube: schwarz</p> <p>Set 1 Winkelfeststellung inkl. Rändelschraube, 2 Schrauben DIN 7984 - M8 × 18, 2 Schrauben ISO 7380 - M8 × 18, 2 Scheiben DIN 125 - 8.4, 4 Nutensteine - Nut 8 - M8</p> <p>Liefereinheit 10 Stück</p>	<p>Model Aluminum die-cast</p> <p>Description To connect aluminum profiles at an adjustable angle, can be fixed in 2.5° steps by means of a knurled screw</p> <p>Material Body: Aluminum die-cast Knurled screw: Plastic PA, glass fiber reinforced Assembly material: Steel</p> <p>Color Knurled screw: Black</p> <p>Set 1 angle locking bracket incl. knurled screw, 2 screws DIN 7984 - M8 × 18, 2 screws ISO 7380 - M8 × 18, 2 shims DIN 125 - 8.4, 4 T-slot nuts - slot 8 - M8</p> <p>Pack Quantity 10 pieces</p>
---	--



Winkelfeststellung 40/80 (Set)
 Angle Locking Bracket 40/80 (Set)

Gewicht [g]
 Weight [g]

Teil-Nr.
 Part #

275.0

093WG403