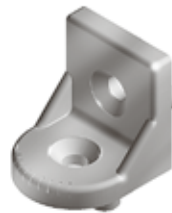
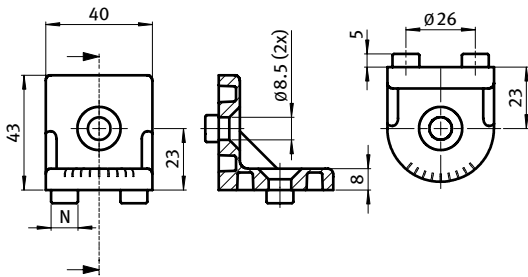




DREHWINKEL 45

TURNING ANGLE 45

| | | | |
|----------------------|--|----------------------|--|
| Ausführung | Aluminiumdruckguss | Model | Aluminum die-cast |
| Beschreibung | zur Verbindung von zwei Aluminiumprofilen in verschiedenen Winkeln zwischen 0° und 180° | Description | To connect aluminum profiles at various angles from 0° to 180° |
| Material | Drehwinkel: Aluminiumdruckguss Zentrierbolzen: Kunststoff PA, glasfaserverstärkt Montageset: Stahl | Material | Turning Angle: Aluminum die-cast Centering bolts: Plastic PA, glass fiber reinforced Assembly set: Steel |
| Farbe | Zentrierbolzen: schwarz | Color | Centering bolts: Black |
| Montageset | 5 Schrauben DIN 7991 - M8 × 20, 2 Hammermuttern - Nut 10 - M8 | Assembly Set | 5 screws DIN 7991 - M8 × 20, 2 hammer nuts - slot 10 - M8 |
| Liefereinheit | 10 Stück | Pack Quantity | 10 pieces |



| Drehwinkel Turning Angles | N | Gewicht [g] Weight [g] | Teil-Nr. Part # |
|--|--------|---------------------------|-----------------------|
| | | 44.2 | 093WG402 |
| | 8 / 10 | 45.0 | * 093WG402N |
| blank inkl. Montageset <i>Plain incl. assembly set</i> | 8 / 10 | 76.0 | * 093WG402NS02 |
| alufarbig inkl. Montageset <i>Alu color incl. assembly set</i> | 8 / 10 | 77.0 | * 093WG402NS03 |

