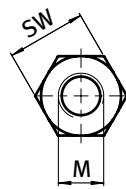
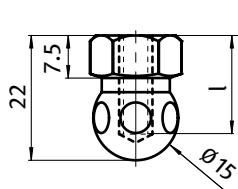




KUGELKOPF MIT INNENGEWINDE, KUGEL 15

BALL JOINT WITH FEMALE THREAD, BALL JOINT 15

Ausführung	für Gelenkstellfüße, Stahl / Edelstahl	Model	For swivel feet, steel / stainless steel
Beschreibung	zur direkten Befestigung von Stellfüßen mittels Standardschrauben	Description	To fix leveling feet using standard screws
Material	Stahl, verzinkt / Edelstahl 1.4301	Material	Steel, zinc plated / stainless steel SS304
Liefereinheit	10 Stück	Pack Quantity	10 pieces



Kugelpkopf mit Innengewinde, Kugel 15 <i>Ball Joint with Female Thread, Ball Joint 15</i>	SW	Gewicht [g] <i>Weight [g]</i>	Teil-Nr. <i>Part #</i>
Stahl, verzinkt <i>Steel, zinc plated</i>	14 mm	20.0	098DSW14M06M
	14 mm	20.0	098DSW14M08M
	14 mm - 9/16"	20.0	098DSW14U1/4M
Edelstahl <i>Stainless steel</i>	14 mm	20.0	098DSW14M06E
	14 mm	20.0	098DSW14M08E
	14 mm - 9/16"	20.0	098DSW14U1/4E