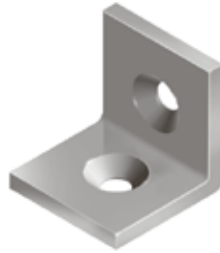
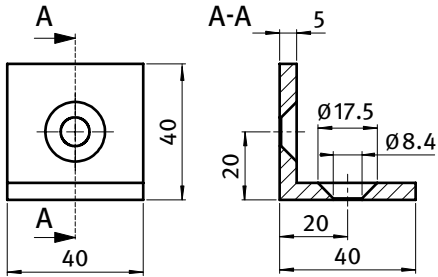




STAHLWINKEL 40

STEEL CONNECTION ANGLE 40

| | | | |
|----------------------|--|----------------------|--|
| Ausführung | Stahl, ab Profil 40 | Model | Steel, profile 40 and up |
| Beschreibung | zur rechtwinkligen Verbindung von zwei Aluminiumprofilen | Description | To connect two aluminum profiles at right angles |
| Material | Stahl | Material | Steel |
| Liefereinheit | 10 Stück | Pack Quantity | 10 pieces |
| Extras | weitere Oberflächen auf Anfrage | Specials | Other surfaces on request |



Stahlwinkel 40
 Steel Connection Angle 40

Gewicht [g]
 Weight [g]

Teil-Nr.
 Part #

| | | |
|--|-------|---------------------|
| blau verzinkt <i>Blue zinc plated</i> | 102.0 | 093WU401VS01 |
| schwarz pulverbeschichtet <i>Black powder coated</i> | 102.0 | 093WU401S |