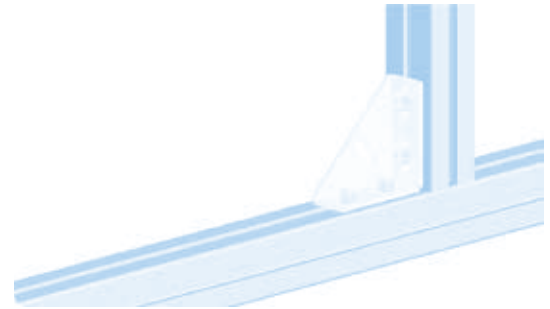
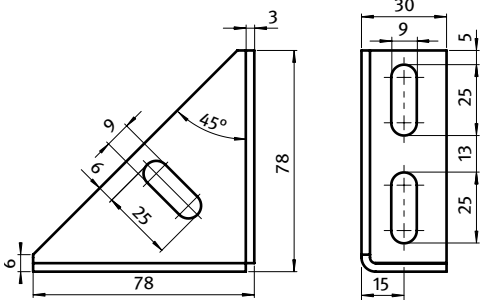




**STAHLWINKEL 30/80**

**STEEL CONNECTION ANGLE 30/80**

<b>Ausführung</b>	Stahl, ab Profil 30	<b>Model</b>	Steel, profile 30 and up
<b>Beschreibung</b>	zur rechtwinkligen Verbindung von zwei Aluminiumprofilen	<b>Description</b>	To connect two aluminum profiles at right angles
<b>Material</b>	Stahl	<b>Material</b>	Steel
<b>Oberfläche</b>	verzinkt	<b>Surface</b>	Zinc plated
<b>Liefereinheit</b>	10 Stück	<b>Pack Quantity</b>	10 pieces



Stahlwinkel 30/80  
 Steel Connection Angle 30/80

Gewicht [g]  
 Weight [g]

Teil-Nr.  
 Part #

139.0

093WV781V