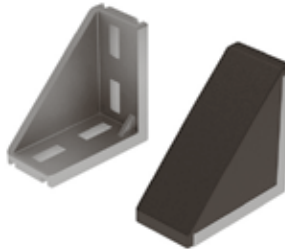
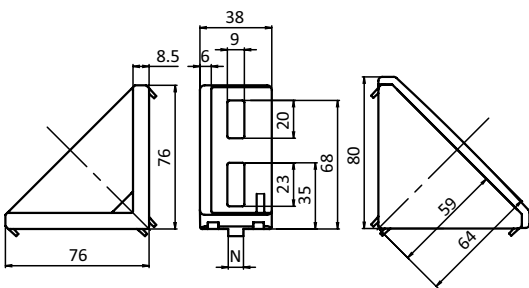




ALUWINKEL 40/80

ALU CONNECTION ANGLE 40/80

| | | | |
|----------------------|--|----------------------|---|
| Ausführung | Aluminiumdruckguss, ab Profil 40 | Model | Aluminum die-cast, profile 40 and up |
| Beschreibung | zur rechtwinkligen Verbindung von Profilen und Flächenelementen; die offene Seite des Winkels kann durch die Abdeckkappe verschlossen werden | Description | To connect two aluminum profiles or panels at right angles; the connection angle can be closed with the cover cap |
| Material | Winkel: Aluminiumdruckguss Abdeckkappe: Kunststoff PA, glasfaserverstärkt Montageset: Stahl | Material | Angle: Aluminum die-cast Cover cap: Plastic PA, glass fiber reinforced Assembly set: Steel |
| Farbe | Abdeckkappe: schwarz | Color | Cover cap: Black |
| Montageset | 4 Hammerschrauben - Nut 10 - M8 × 25, 4 Flanschmuttern M8 | Assembly Set | 4 hammer head screws - slot 10 - M8 × 25, 4 flange nuts M8 |
| Liefereinheit | 10 Stück | Pack Quantity | 10 pieces |
| Extras | weitere Oberflächen, weitere Farben auf Anfrage | Specials | Other surfaces, other colors on request |



| Aluwinkel 40/80 Alu Connection Angle 40/80 | N | Gewicht [g] Weight [g] | Profil Profile | Teil-Nr. Part # |
|--|----|---------------------------|-------------------|--------------------|
| blank Plain | | 123.0 | | 093W403 |
| | 8 | 120.2 | | 093W403N08 |
| | 10 | 118.5 | | 093W403N10 |
| alufarbig Alu color | 10 | 123.0 | | 093W403N10S03 |
| Abdeckkappe Cover cap | | 87.0 | | 093WA403 |
| blank, inkl. Montageset Plain, with assembly set | 10 | 120.0 | B | 093W403N10S01 |
| alufarbig, inkl. Montageset Alu color, with assembly set | 10 | 123.0 | B | 093W403N10S04 |

