

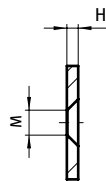
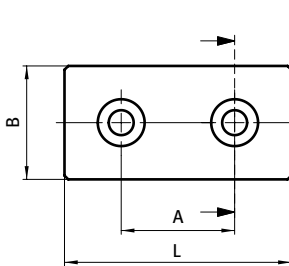


VERBINDERPLATTE

CONNECTION PLATE

Ausführung Stahl, ab Profil 20
Beschreibung zur Verbindung von zwei Aluminiumprofilen
Material Stahl
Befestigung Senkschrauben
Liefereinheit 10 Stück
Extras weitere Oberflächen, weitere Farben auf Anfrage
Hinweis * mit 3 Senkbohrungen
 ** mit 4 Senkbohrungen

Model Steel, profile 20 and up
Description To connect two aluminum profiles
Material Steel
Fastening Countersunk screws
Pack Quantity 10 pieces
Specials Other surfaces, other colors on request
Tip * With 3 countersunk holes
 ** with 4 countersunk holes



| Verbinderplatte Connection Plate | A [mm] | B [mm] | H [mm] | L [mm] | für Schraube for Screw | Gewicht [g] Weight [g] | Teil-Nr. Part # |
|--|-----------|-----------|-----------|-----------|---------------------------|---------------------------|--------------------|
| schwarz pulverbeschichtet Black powder coated | 20.0 | 20.0 | 3.0 | 40.0 | 2x M5 | 12.0 | 093V2040S |
| | 30.0 | 30.0 | 3.0 | 60.0 | 2x M6 | 36.0 | 093V3060S |
| | 2x 30.0 | 30.0 | 4.0 | 90.0 | 3x M6 | 78.0 | * 093V3090S |
| | 40.0 | 40.0 | 5.0 | 80.0 | 2x M8 | 116.0 | 093V4080S |
| | 2x 40.0 | 40.0 | 5.0 | 120.0 | 3x M8 | 172.0 | * 093V40120S |
| | 3x 40.0 | 40.0 | 5.0 | 160.0 | 4x M5 | 223.0 | ** 093V40160S |
| | 45.0 | 45.0 | 5.0 | 90.0 | 2x M8 | 149.0 | 093V4590S |
| blau verzinkt Blue zinc plated | 30.0 | 30.0 | 3.0 | 60.0 | 2x M6 | 36.0 | 093V3060V |
| | 40.0 | 40.0 | 5.0 | 80.0 | 2x M8 | 116.0 | 093V4080V |
| | 45.0 | 45.0 | 5.0 | 90.0 | 2x M8 | 149.0 | 093V4590V |