



## ALUDRUCKGUSS-KOMBISCHARNIER 40

## ALUMINUM DIE-CAST COMBI HINGE 40

**Ausführung** aushängbar

**Beschreibung** für Flächenelemente und Aluminiumprofile, pro Scharnierflügel je ein Steckplatz für Zentrierbolzen, Scharnierachse in Buchsensystem gelagert

**Material** Flügel: Aluminiumdruckguss  
Achse: Edelstahl  
Buchsen: PTFE  
Zentrierbolzen (optional): Kunststoff PA, glasfaser-verstärkt

**Farbe** Zentrierbolzen (optional): schwarz

**Befestigung** vorderseitig mit Senkschrauben M6

**Liefereinheit** 10 Stück

**Model** Detachable

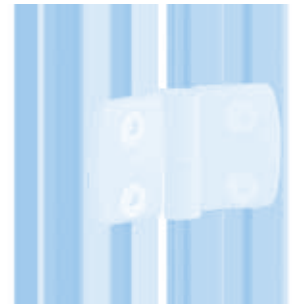
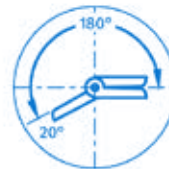
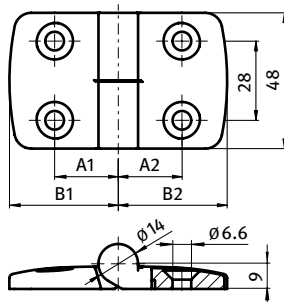
**Description** To hinge panels or aluminum profiles, each wing with a hole for centering bolts, with bearing system for axle

**Material** Wings: Die-cast aluminum  
Axle: Stainless steel  
Bearings: PTFE  
Centering bolts (optional): Plastic PA, glass fiber reinforced

**Color** Centering bolts (optional): Black

**Fastening** From the front, using M6 countersunk screws

**Pack Quantity** 10 pieces



Kombischarnier Combi Hinge	A1 [mm]	A2 [mm]	B1 [mm]	B2 [mm]	F <sub>Amax</sub> [N]	F <sub>Rmax</sub> [N]	Bezeichnung Description	Gewicht [g] Weight [g]	Teil-Nr. Part #
L: links <i>Left</i>	22.5	22.5	38.5	38.5	200	550	40/40	68.0	095A4040LS20
	22.5	15.0	38.5	26.0	250	410	40/25	62.0	095A4025LS20
	22.5	17.5	38.5	29.5	280	450	40/30	66.0	095A4030LS20
	22.5	20.0	38.5	36.0	250	500	40/35	70.0	095A4035LS20
	22.5	25.0	38.5	43.5	200	550	40/45	70.0	095A4045LS20
	22.5	27.5	38.5	48.5	175	575	40/50	73.0	095A4050LS20
	22.5	32.5	38.5	57.5	150	575	40/60	78.0	095A4060LS20
R: rechts <i>Right</i>	22.5	22.5	38.5	38.5	200	550	40/40	68.0	095A4040RS20
	15.0	22.5	26.0	38.5	250	410	40/25	62.0	095A4025RS20
	17.5	22.5	29.5	38.5	280	450	40/30	66.0	095A4030RS20
	20.0	22.5	36.0	38.5	250	500	40/35	70.0	095A4035RS20
	25.0	22.5	43.5	38.5	200	550	40/45	70.0	095A4045RS20
	27.5	22.5	48.5	38.5	175	575	40/50	73.0	095A4050RS20
	32.5	22.5	57.5	38.5	150	575	40/60	78.0	095A4060RS20
Zentrierbolzen Centering bolt							Nut 5 Slot 5	1.0	095AN05
							Nut 6 Slot 6	1.0	095AN06
							Nut 8 Slot 8	1.0	095AN08
							Nut 10 Slot 10	1.0	095AN10
							Nut 12 Slot 12	1.0	095AN12
							Nut 14 Slot 14	1.0	095AN14

