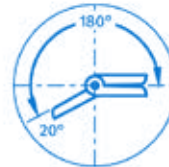
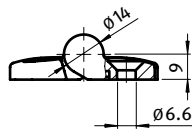
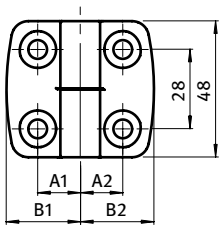




ALUDRUCKGUSS-KOMBISCHARNIER 25

ALUMINUM DIE-CAST COMBI HINGE 25

Ausführung	aushängbar	Model	Detachable
Beschreibung	für Flächenelemente und Aluminiumprofile, pro Scharnierflügel je ein Steckplatz für Zentrierbolzen, Scharnierachse in Buchsensystem gelagert	Description	To hinge panels or aluminum profiles, each wing with a hole for centering bolts, with bearing system for axle
Material	Flügel: Aluminiumdruckguss Achse: Edelstahl Buchsen: PTFE Zentrierbolzen (optional): Kunststoff PA, glasfaserverstärkt	Material	Wings: Die-cast aluminum Axle: Stainless steel Bearings: PTFE Centering bolts (optional): Plastic PA, glass fiber reinforced
Farbe	Zentrierbolzen (optional): schwarz	Color	Centering bolts (optional): Black
Befestigung	vorderseitig mit Senkschrauben M6	Fastening	From the front, using M6 countersunk screws
Liefereinheit	10 Stück	Pack Quantity	10 pieces



Kombischarnier Combi Hinge	A1 [mm]	A2 [mm]	B1 [mm]	B2 [mm]	F _{Amax} [N]	F _{Rmax} [N]	Bezeichnung Description	Gewicht [g] Weight [g]	Teil-Nr. Part #
L: links <i>Left</i>	15.0	15.0	26.0	26.0	250	410	25/25	56.0	095A2525LS20
	15.0	17.5	26.0	29.5	280	450	25/30	60.0	095A2530LS20
	15.0	20.0	26.0	36.0	250	500	25/35	64.0	095A2535LS20
	15.0	22.5	26.0	38.5	200	550	25/40	62.0	095A2540LS20
	15.0	25.0	26.0	43.5	200	550	25/45	64.0	095A2545LS20
	15.0	27.5	26.0	48.5	175	575	25/50	67.0	095A2550LS20
	15.0	32.5	26.0	57.5	150	575	25/60	72.0	095A2560LS20
R: rechts <i>Right</i>	15.0	15.0	26.0	26.0	250	410	25/25	56.0	095A2525RS20
	17.5	15.0	29.5	26.0	280	450	25/30	60.0	095A2530RS20
	20.0	15.0	36.0	26.0	250	500	25/35	64.0	095A2535RS20
	22.5	15.0	38.5	26.0	200	550	25/40	62.0	095A2540RS20
	25.0	15.0	43.5	26.0	200	550	25/45	64.0	095A2545RS20
	27.5	15.0	48.5	26.0	175	575	25/50	67.0	095A2550RS20
	32.5	15.0	57.5	26.0	150	575	25/60	72.0	095A2560RS20
Zentrierbolzen Centering bolt							Nut 5 Slot 5	1.0	095AN05
							Nut 6 Slot 6	1.0	095AN06
							Nut 8 Slot 8	1.0	095AN08
							Nut 10 Slot 10	1.0	095AN10
							Nut 12 Slot 12	1.0	095AN12
							Nut 14 Slot 14	1.0	095AN14

