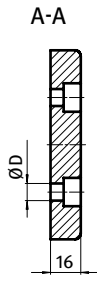
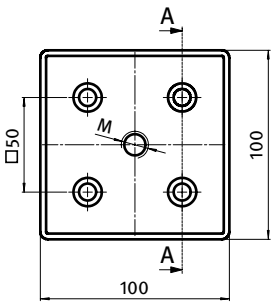




**TRANSPORT- UND FUßPLATTE 100 × 100**

**TRANSPORT AND BASE PLATE 100 × 100**

<b>Ausführung</b>	Zinkdruckguss	<b>Model</b>	Zinc die-cast
<b>Beschreibung</b>	zur Aufnahme von Stellfüßen, Rollen, Haken oder ähnlichen Bauteilen; stirnseitig mit den Profilen verschraubbar	<b>Description</b>	To mount leveling feet, rollers, hooks or similar components; screw joint to the face of the profile
<b>Material</b>	Zinkdruckguss	<b>Material</b>	Zinc die-cast
<b>Liefereinheit</b>	10 Stück	<b>Pack Quantity</b>	10 pieces
<b>Extras</b>	weitere Oberflächen, weitere Farben auf Anfrage	<b>Specials</b>	Other surfaces, other colors on request



Transport- und Fußplatte 100 × 100 <i>Transport and Base Plate 100 × 100</i>	M	ØD [mm]	Gewicht [g] <i>Weight [g]</i>	Teil-Nr <i>Part#</i>
pulverbeschichtet <i>Powder coated</i>	M10	9 (M8)	548.0	<a href="#">093T1001001008S</a>
	M10	14.5 (M12)	541.0	<a href="#">093T1001001012S</a>
	M12	9 (M8)	545.0	<a href="#">093T1001001208S</a>
	M12	14.5 (M12)	538.0	<a href="#">093T1001001212S</a>
	M14	9 (M8)	541.0	<a href="#">093T1001001408S</a>
	M14	14.5 (M12)	531.0	<a href="#">093T1001001412S</a>
	M16	9 (M8)	540.0	<a href="#">093T1001001608S</a>
	M16	14.5 (M12)	527.0	<a href="#">093T1001001612S</a>
	M20	9 (M8)	531.0	<a href="#">093T1001002008S</a>
	M20	14.5 (M12)	521.0	<a href="#">093T1001002012S</a>
blank <i>Plain</i>	M10	9 (M8)	548.0	<a href="#">093T1001001008R</a>
	M10	14.5 (M12)	541.0	<a href="#">093T1001001012R</a>
	M12	9 (M8)	545.0	<a href="#">093T1001001208R</a>
	M12	14.5 (M12)	538.0	<a href="#">093T1001001212R</a>
	M14	9 (M8)	541.0	<a href="#">093T1001001408R</a>
	M14	14.5 (M12)	531.0	<a href="#">093T1001001412R</a>
	M16	9 (M8)	540.0	<a href="#">093T1001001608R</a>
	M16	14.5 (M12)	527.0	<a href="#">093T1001001612R</a>
	M20	9 (M8)	531.0	<a href="#">093T1001002008R</a>
	M20	14.5 (M12)	521.0	<a href="#">093T1001002012R</a>