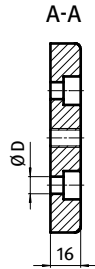
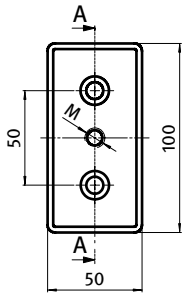




TRANSPORT- UND FUßPLATTE 50 × 100

TRANSPORT AND BASE PLATE 50 × 100

Ausführung	Zinkdruckguss	Model	Zinc die-cast
Beschreibung	zur Aufnahme von Stellfüßen, Rollen, Haken oder ähnlichen Bauteilen; stirnseitig mit den Profilen verschraubbar	Description	To mount leveling feet, rollers, hooks or similar components; screw joint to the face of the profile
Material	Zinkdruckguss	Material	Zinc die-cast
Liefereinheit	10 Stück	Pack Quantity	10 pieces
Extras	weitere Oberflächen, weitere Farben auf Anfrage	Specials	Other surfaces, other colors on request



Transport- und Fußplatte 50 × 100 <i>Transport and Base Plate 50 × 100</i>	M	ØD [mm]	Gewicht [g] <i>Weight [g]</i>	Teil-Nr <i>Part#</i>
pulverbeschichtet <i>Powder coated</i>	M10	11 (M10)	310.0	093T501001010S
	M10	14.5 (M12)	296.0	093T501001012S
	M12	11 (M10)	306.0	093T501001210S
	M12	14.5 (M12)	292.0	093T501001212S
	M14	11 (M10)	300.0	093T501001410S
	M14	14.5 (M12)	286.0	093T501001412S
	M16	11 (M10)	296.0	093T501001610S
	M16	14.5 (M12)	280.0	093T501001612S
	M20	11 (M10)	289.0	093T501002010S
	M20	14.5 (M12)	273.0	093T501002012S
blank <i>Plain</i>	M10	11 (M10)	310.0	093T501001010R
	M10	14.5 (M12)	296.0	093T501001012R
	M12	11 (M10)	306.0	093T501001210R
	M12	14.5 (M12)	292.0	093T501001212R
	M14	11 (M10)	300.0	093T501001410R
	M14	14.5 (M12)	286.0	093T501001412R
	M16	11 (M10)	296.0	093T501001610R
	M16	14.5 (M12)	280.0	093T501001612R
	M20	11 (M10)	289.0	093T501002010R
	M20	14.5 (M12)	273.0	093T501002012R