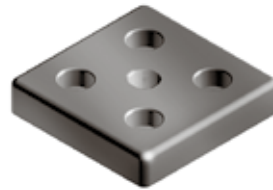
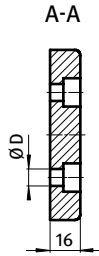
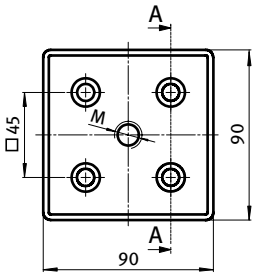




**TRANSPORT- UND FUßPLATTE 90 × 90**

**TRANSPORT AND BASE PLATE 90 × 90**

<b>Ausführung</b>	Zinkdruckguss	<b>Model</b>	Zinc die-cast
<b>Beschreibung</b>	zur Aufnahme von Stellfüßen, Rollen, Haken oder ähnlichen Bauteilen; stirnseitig mit den Profilen verschraubbar	<b>Description</b>	To mount leveling feet, rollers, hooks or similar components; screw joint to the face of the profile
<b>Material</b>	Zinkdruckguss	<b>Material</b>	Zinc die-cast
<b>Liefereinheit</b>	10 Stück	<b>Pack Quantity</b>	10 pieces
<b>Extras</b>	weitere Oberflächen, weitere Farben auf Anfrage	<b>Specials</b>	Other surfaces, other colors on request



Transport- und Fußplatte 90 × 90 <i>Transport and Base Plate 90 × 90</i>	M	ØD [mm]	Gewicht [g] <i>Weight [g]</i>	Teil-Nr <i>Part#</i>
pulverbeschichtet <i>Powder coated</i>	M10	9 (M8)	522.0	<a href="#">093T90901008S</a>
	M10	14.5 (M12)	482.0	<a href="#">093T90901012S</a>
	M12	9 (M8)	520.0	<a href="#">093T90901208S</a>
	M12	14.5 (M12)	480.0	<a href="#">093T90901212S</a>
	M14	9 (M8)	519.0	<a href="#">093T90901408S</a>
	M14	14.5 (M12)	475.0	<a href="#">093T90901412S</a>
	M16	9 (M8)	516.0	<a href="#">093T90901608S</a>
	M16	14.5 (M12)	471.0	<a href="#">093T90901612S</a>
	M20	9 (M8)	510.0	<a href="#">093T90902008S</a>
	M20	14.5 (M12)	463.0	<a href="#">093T90902012S</a>
blank <i>Plain</i>	M10	9 (M8)	522.0	<a href="#">093T90901008R</a>
	M10	14.5 (M12)	482.0	<a href="#">093T90901012R</a>
	M12	9 (M8)	520.0	<a href="#">093T90901208R</a>
	M12	14.5 (M12)	480.0	<a href="#">093T90901212R</a>
	M14	9 (M8)	519.0	<a href="#">093T90901408R</a>
	M14	14.5 (M12)	475.0	<a href="#">093T90901412R</a>
	M16	9 (M8)	516.0	<a href="#">093T90901608R</a>
	M16	14.5 (M12)	471.0	<a href="#">093T90901612R</a>
	M20	9 (M8)	510.0	<a href="#">093T90902008R</a>
	M20	14.5 (M12)	463.0	<a href="#">093T90902012R</a>