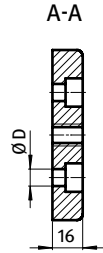
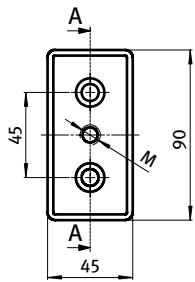




TRANSPORT- UND FUßPLATTE 45 × 90

TRANSPORT AND BASE PLATE 45 × 90

Ausführung	Zinkdruckguss	Model	Zinc die-cast
Beschreibung	zur Aufnahme von Stellfüßen, Rollen, Haken oder ähnlichen Bauteilen; stirnseitig mit den Profilen verschraubbar	Description	To mount leveling feet, rollers, hooks or similar components; screw joint to the face of the profile
Material	Zinkdruckguss	Material	Zinc die-cast
Liefereinheit	10 Stück	Pack Quantity	10 pieces
Extras	weitere Oberflächen, weitere Farben auf Anfrage	Specials	Other surfaces, other colors on request



Transport- und Fußplatte 45 × 90 <i>Transport and Base Plate 45 × 90</i>	M	ØD [mm]	Gewicht [g] <i>Weight [g]</i>	Teil-Nr <i>Part#</i>
pulverbeschichtet <i>Powder coated</i>	M10	9 (M8)	280.0	093T45901008S
	M10	14.5 (M12)	257.0	093T45901012S
	M12	9 (M8)	276.0	093T45901208S
	M12	14.5 (M12)	255.0	093T45901212S
	M14	9 (M8)	270.0	093T45901408S
	M14	14.5 (M12)	253.0	093T45901412S
	M16	9 (M8)	266.0	093T45901608S
	M16	14.5 (M12)	247.0	093T45901612S
	M20	9 (M8)	256.0	093T45902008S
	M20	14.5 (M12)	243.0	093T45902012S
blank <i>Plain</i>	M10	9 (M8)	280.0	093T45901008R
	M10	14.5 (M12)	257.0	093T45901012R
	M12	9 (M8)	276.0	093T45901208R
	M12	14.5 (M12)	255.0	093T45901212R
	M14	9 (M8)	270.0	093T45901408R
	M14	14.5 (M12)	253.0	093T45901412R
	M16	9 (M8)	266.0	093T45901608R
	M16	14.5 (M12)	247.0	093T45901612R
	M20	9 (M8)	256.0	093T45902008R
	M20	14.5 (M12)	243.0	093T45902012R