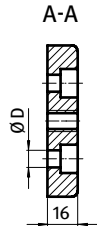
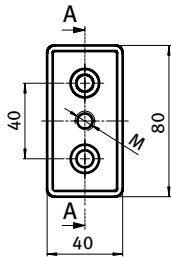




**TRANSPORT- UND FUßPLATTE 40 × 80**

**TRANSPORT AND BASE PLATE 40 × 80**

<b>Ausführung</b>	Zinkdruckguss	<b>Model</b>	Zinc die-cast
<b>Beschreibung</b>	zur Aufnahme von Stellfüßen, Rollen, Haken oder ähnlichen Bauteilen; stirnseitig mit den Profilen verschraubbar	<b>Description</b>	To mount leveling feet, rollers, hooks or similar components; screw joint to the face of the profile
<b>Material</b>	Zinkdruckguss	<b>Material</b>	Zinc die-cast
<b>Liefereinheit</b>	10 Stück	<b>Pack Quantity</b>	10 pieces
<b>Extras</b>	weitere Oberflächen, weitere Farben auf Anfrage	<b>Specials</b>	Other surfaces, other colors on request



Transport- und Fußplatte 40 × 80 <i>Transport and Base Plate 40 × 80</i>	M	ØD [mm]	Gewicht [g] <i>Weight [g]</i>	Teil-Nr <i>Part#</i>
pulverbeschichtet <i>Powder coated</i>	M8	9 (M8)	213.0	<a href="#">093T40800808S</a>
	M8	14.5 (M12)	192.0	<a href="#">093T40800812S</a>
	M10	9 (M8)	211.0	<a href="#">093T40801008S</a>
	M10	14.5 (M12)	190.0	<a href="#">093T40801012S</a>
	M12	9 (M8)	209.0	<a href="#">093T40801208S</a>
	M12	14.5 (M12)	188.0	<a href="#">093T40801212S</a>
	M14	9 (M8)	203.0	<a href="#">093T40801408S</a>
	M14	14.5 (M12)	182.0	<a href="#">093T40801412S</a>
	M16	9 (M8)	199.0	<a href="#">093T40801608S</a>
	M16	14.5 (M12)	178.0	<a href="#">093T40801612S</a>
blank <i>Plain</i>	M20	9 (M8)	195.0	<a href="#">093T40802008S</a>
	M8	9 (M8)	213.0	<a href="#">093T40800808R</a>
	M8	14.5 (M12)	192.0	<a href="#">093T40800812R</a>
	M10	9 (M8)	211.0	<a href="#">093T40801008R</a>
	M10	14.5 (M12)	190.0	<a href="#">093T40801012R</a>
	M12	9 (M8)	209.0	<a href="#">093T40801208R</a>
	M12	14.5 (M12)	188.0	<a href="#">093T40801212R</a>
	M14	9 (M8)	203.0	<a href="#">093T40801408R</a>
	M14	14.5 (M12)	182.0	<a href="#">093T40801412R</a>
	M16	9 (M8)	199.0	<a href="#">093T40801608R</a>
M16	14.5 (M12)	178.0	<a href="#">093T40801612R</a>	
M20	9 (M8)	195.0	<a href="#">093T40802008R</a>	