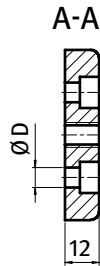
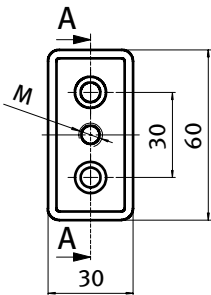


**TRANSPORT- UND FUßPLATTE 30 × 60**

**TRANSPORT AND BASE PLATE 30 × 60**

<b>Ausführung</b>	Zinkdruckguss	<b>Model</b>	Zinc die-cast
<b>Beschreibung</b>	zur Aufnahme von Stellfüßen, Rollen, Haken oder ähnlichen Bauteilen; stirnseitig mit den Profilen verschraubbar	<b>Description</b>	To mount leveling feet, rollers, hooks or similar components; screw joint to the face of the profile
<b>Material</b>	Zinkdruckguss	<b>Material</b>	Zinc die-cast
<b>Liefereinheit</b>	10 Stück	<b>Pack Quantity</b>	10 pieces
<b>Extras</b>	weitere Oberflächen, weitere Farben auf Anfrage	<b>Specials</b>	Other surfaces, other colors on request



Transport- und Fußplatte 30 × 60 <i>Transport and Base Plate 30 × 60</i>	M	ØD [mm]	Gewicht [g] <i>Weight [g]</i>	Teil-Nr <i>Part#</i>
pulverbeschichtet <i>Powder coated</i>	M8	7 (M6)	101.0	<a href="#">093T30600806S</a>
	M8	9 (M8)	100.0	<a href="#">093T30600808S</a>
	M10	7 (M6)	99.0	<a href="#">093T30601006S</a>
	M10	9 (M8)	98.0	<a href="#">093T30601008S</a>
	M12	7 (M6)	97.0	<a href="#">093T30601206S</a>
	M12	9 (M8)	96.0	<a href="#">093T30601208S</a>
	M14	7 (M6)	95.0	<a href="#">093T30601406S</a>
	M14	9 (M8)	94.0	<a href="#">093T30601408S</a>
	M16	7 (M6)	93.0	<a href="#">093T30601606S</a>
	M16	9 (M8)	92.0	<a href="#">093T30601608S</a>
blank <i>Plain</i>	M8	7 (M6)	101.0	<a href="#">093T30600806R</a>
	M8	9 (M8)	100.0	<a href="#">093T30600808R</a>
	M10	7 (M6)	99.0	<a href="#">093T30601006R</a>
	M10	9 (M8)	98.0	<a href="#">093T30601008R</a>
	M12	7 (M6)	97.0	<a href="#">093T30601206R</a>
	M12	9 (M8)	96.0	<a href="#">093T30601208R</a>
	M14	7 (M6)	95.0	<a href="#">093T30601406R</a>
	M14	9 (M8)	94.0	<a href="#">093T30601408R</a>
	M16	7 (M6)	93.0	<a href="#">093T30601606R</a>
	M16	9 (M8)	92.0	<a href="#">093T30601608R</a>